



### **Superficial Spreading Melanoma**

This is the most common type of Melanoma



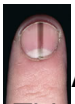
### **Nodular Melanoma**

This is usually the type that grows quickly. It can present as a rapidly enlarging lump



### **Lentigo Maligna Melanoma**

This is usually the type that grows slowly. It is most common in older people and is mainly found on the face



### **Acral Lentiginous Melanoma**

This is the type found on the palms of the hands and soles of the feet, or under nails (Subungual Melanoma)